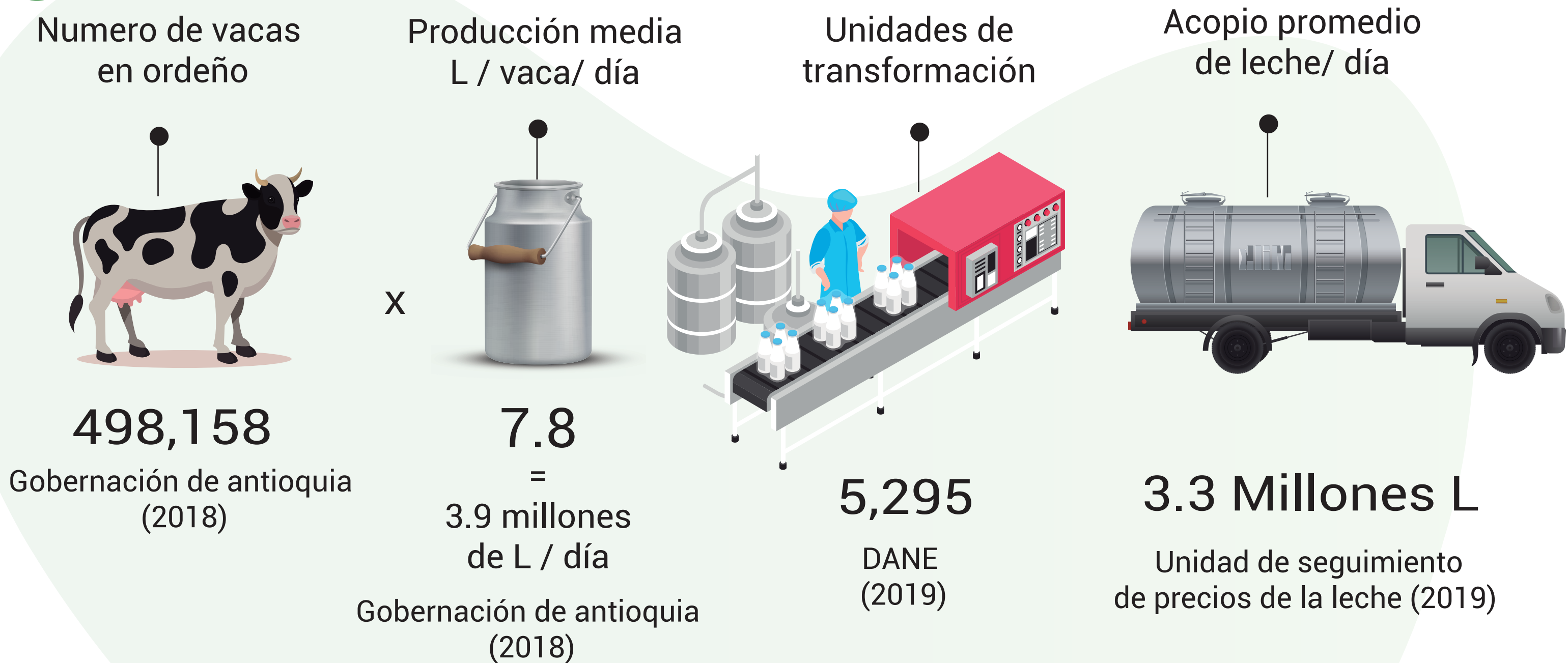
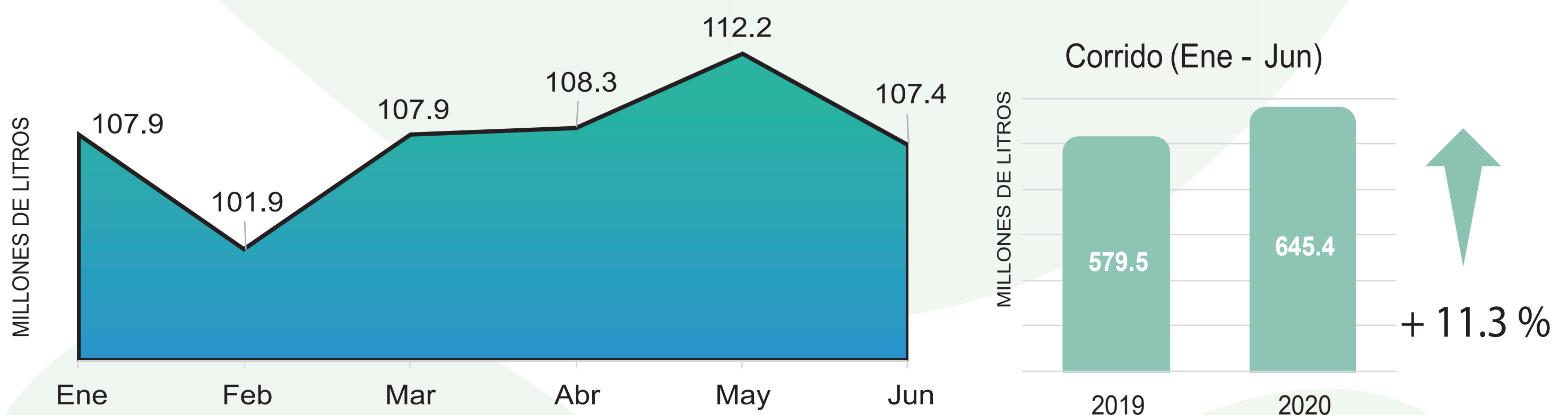


# Panorama del sector lechero en Antioquia parte 1

## 1 Caracterización de la cadena.



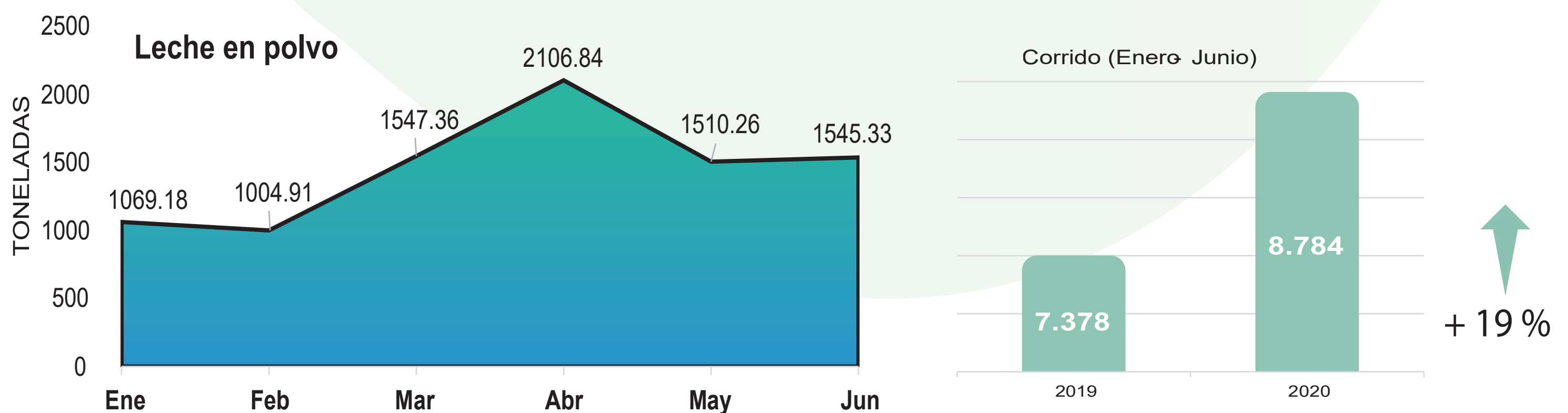
## 2 Volumen de leche acopiado mensualmente por la industria 2020.



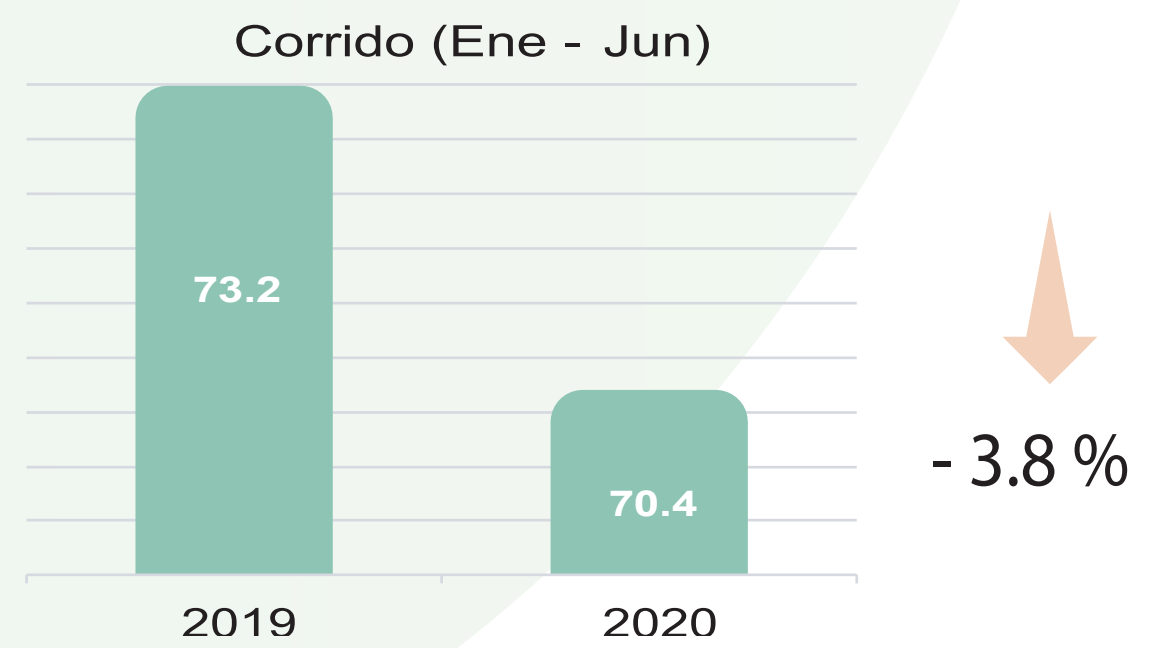
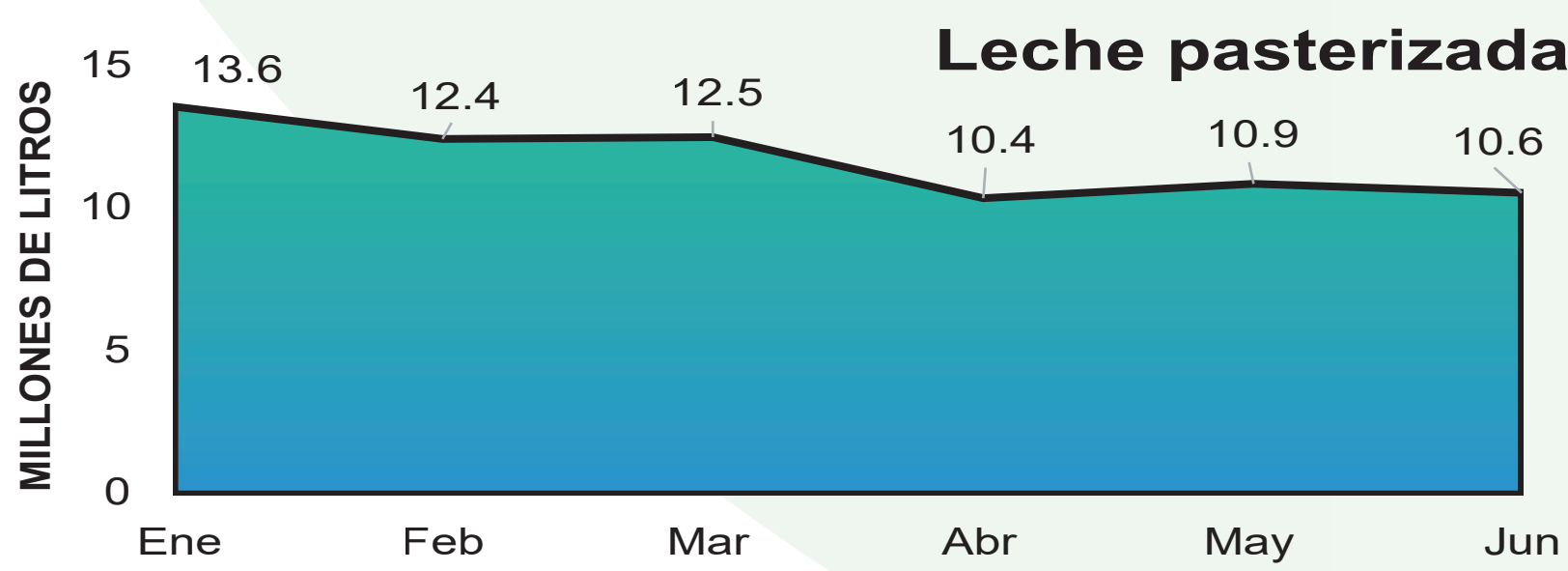
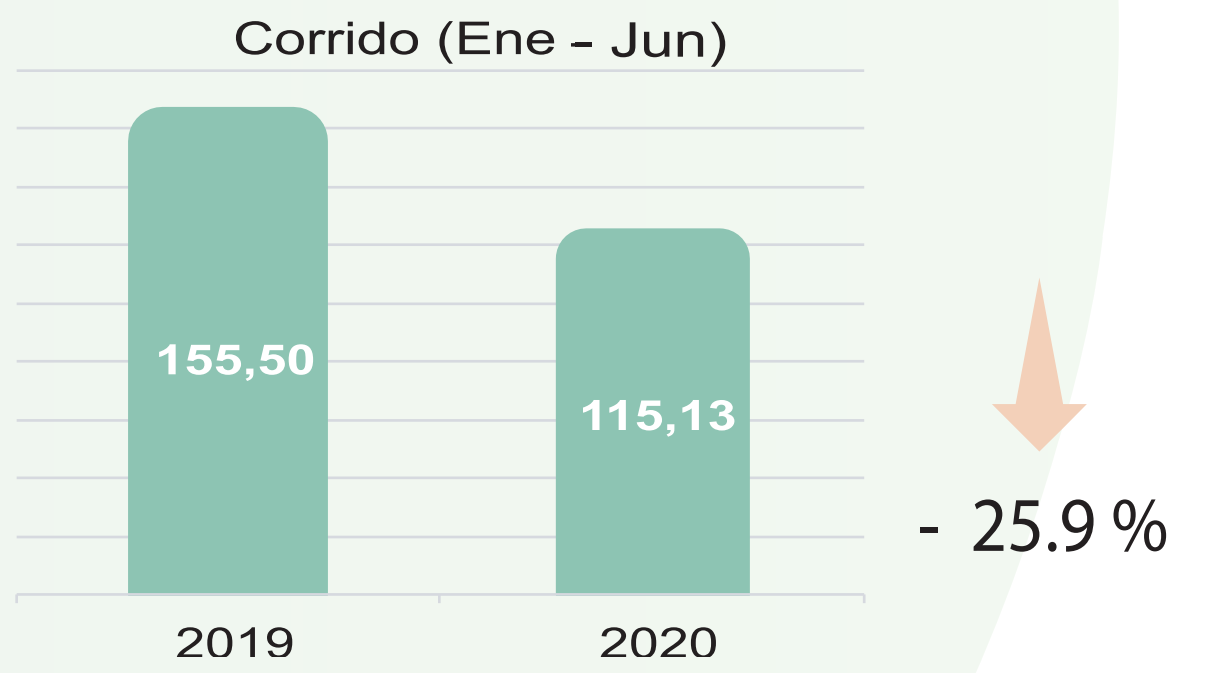
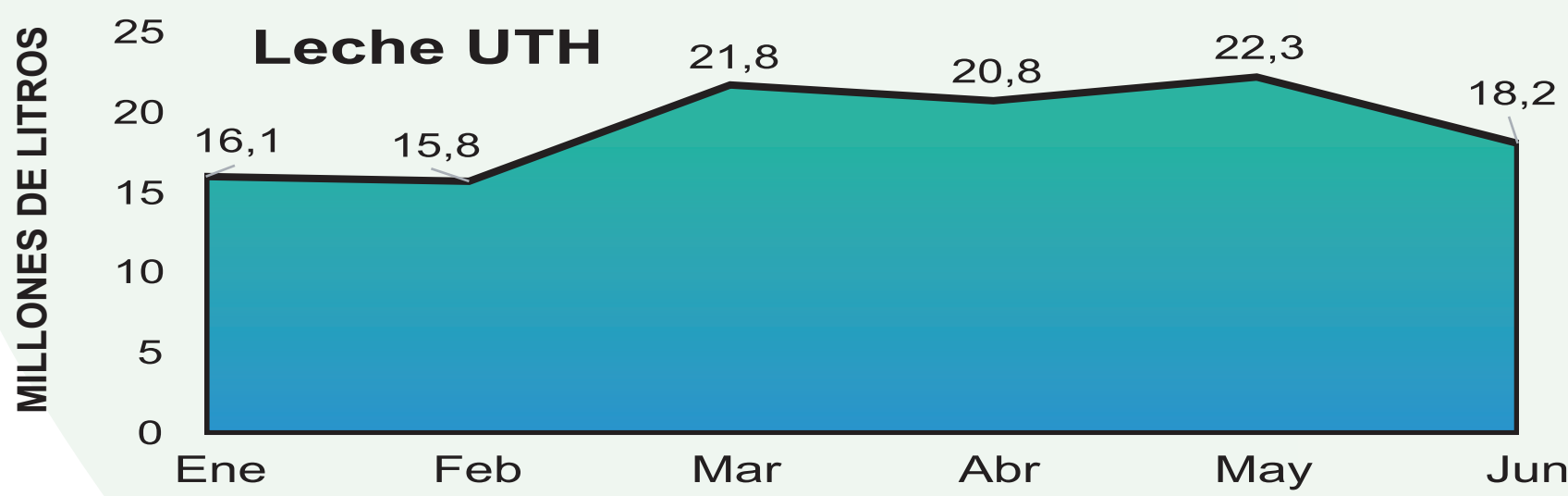
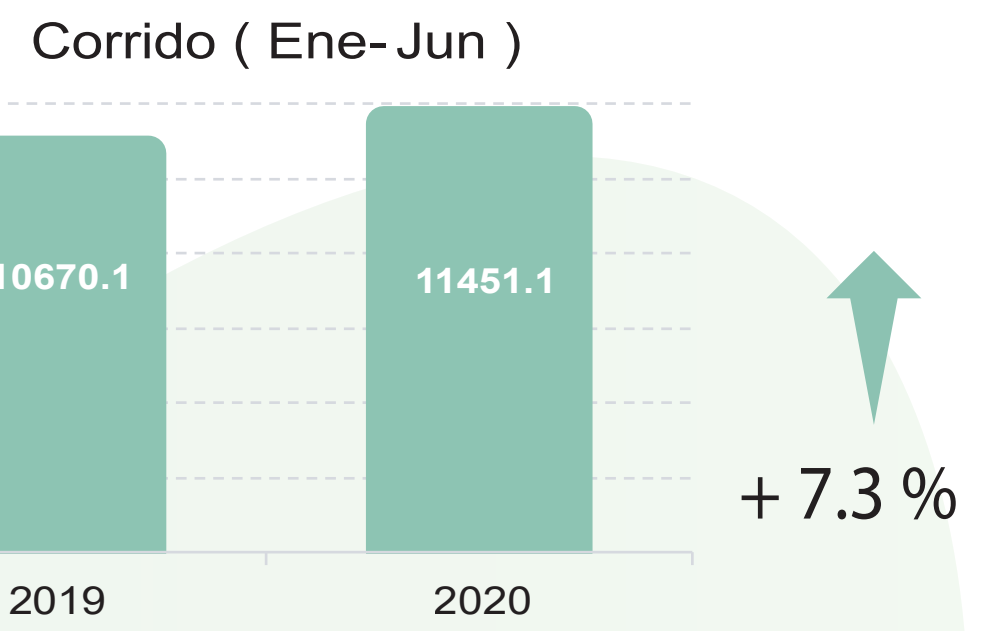
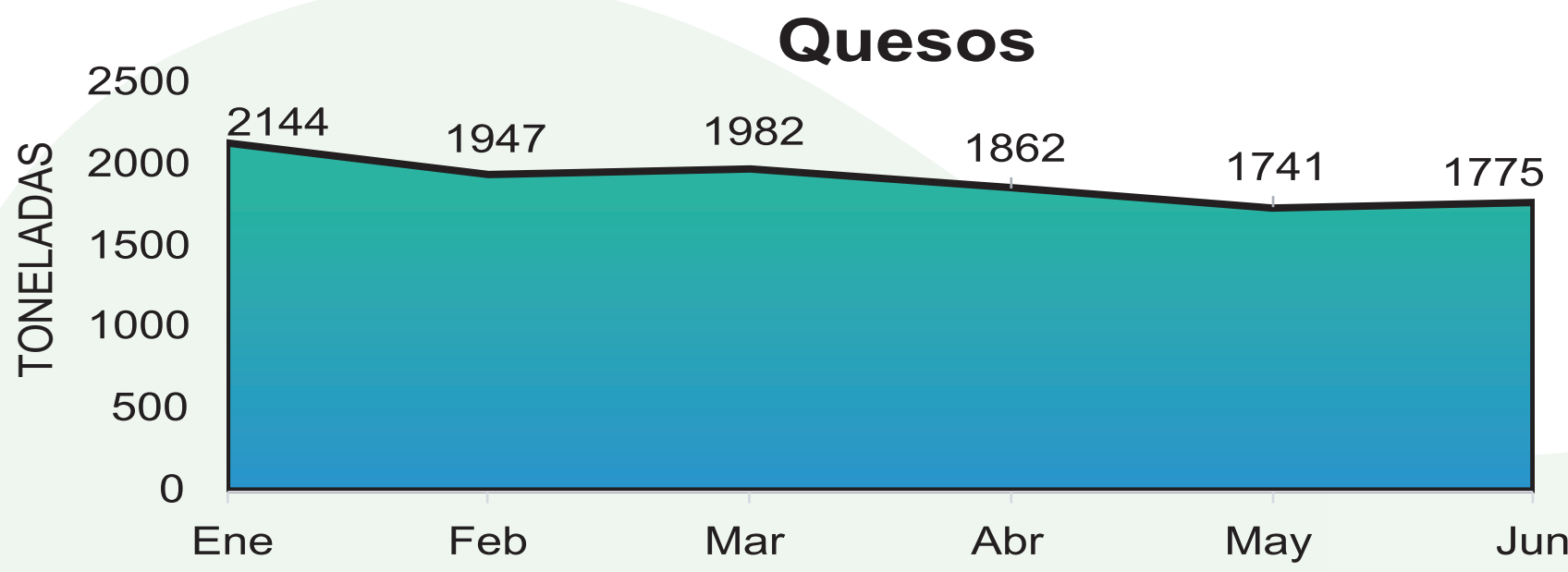
## Precios de la leche cruda pagada por la industria 2020.

MES	PRECIO SIN BONIFICACIONES	TRM	EQUIVALENCIA \$USD	MES	PRECIO TOTAL	TRM	EQUIVALENCIA \$USD
ene-20	\$ 1,138	\$ 3,317	\$ 0.343	ene-20	\$ 1,179	\$ 3,317	\$ 0.355
feb-20	\$ 1,139	\$ 3,408	\$ 0.334	feb-20	\$ 1,185	\$ 3,408	\$ 0.348
mar-20	\$ 1,224	\$ 3,870	\$ 0.316	mar-20	\$ 1,254	\$ 3,870	\$ 0.324
abr-20	\$ 1,218	\$ 3,987	\$ 0.306	abr-20	\$ 1,261	\$ 3,987	\$ 0.316
may-20	\$ 1,251	\$ 3,863	\$ 0.324	may-20	\$ 1,284	\$ 3,863	\$ 0.332
jun-20	\$ 1,234	\$ 3,693	\$ 0.334	jun-20	\$ 1,272	\$ 3,693	\$ 0.344

## 3 Productividad de la industria láctea (principales productos).



# Panorama del sector lechero en Antioquia parte 1



## 4 Precios de los principales productos lácteos en planta.

